

STUDENT WORKSHEET

# HUMAN BONES AND MUMMIFICATION

Part 1

**Spot the skeleton**

Match the name of the animal to its skeleton.

Cow

Fish

Frog

Squirrel

Dolphin

Gorilla

Bat

Lion

Human

Lizard

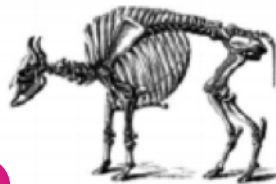
1



2



3



4



5



6



7



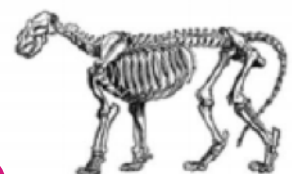
8



9



10



Part 2

**Name the bones**

Label the bones on the skeleton with their names.

Sacrum

Spine

Femur

Tarsals

Scapula

Clavicle

Ulna

Pelvis

Coccyx

Carpals

Skull

Metacarpals

Phalanges (first)

Fibula

Tibula

Metatarsals

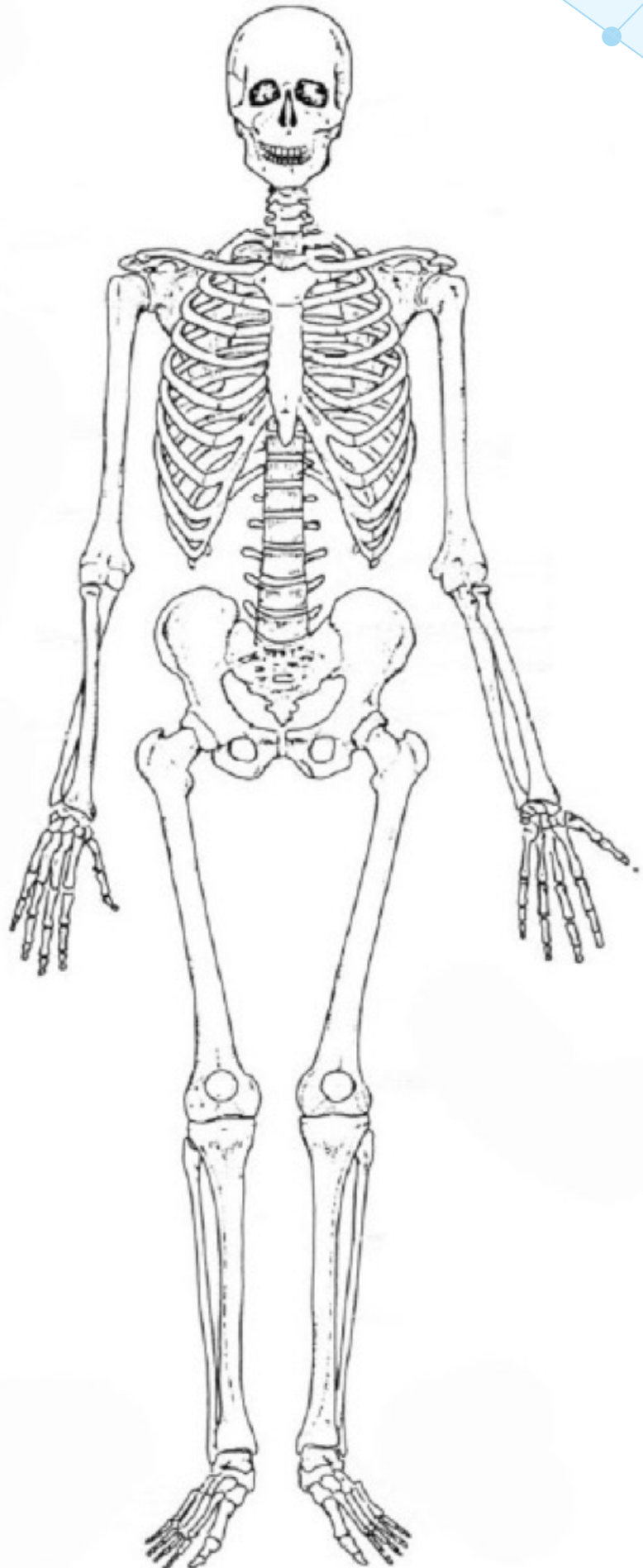
Sternum

Patella

Phalanges (second)

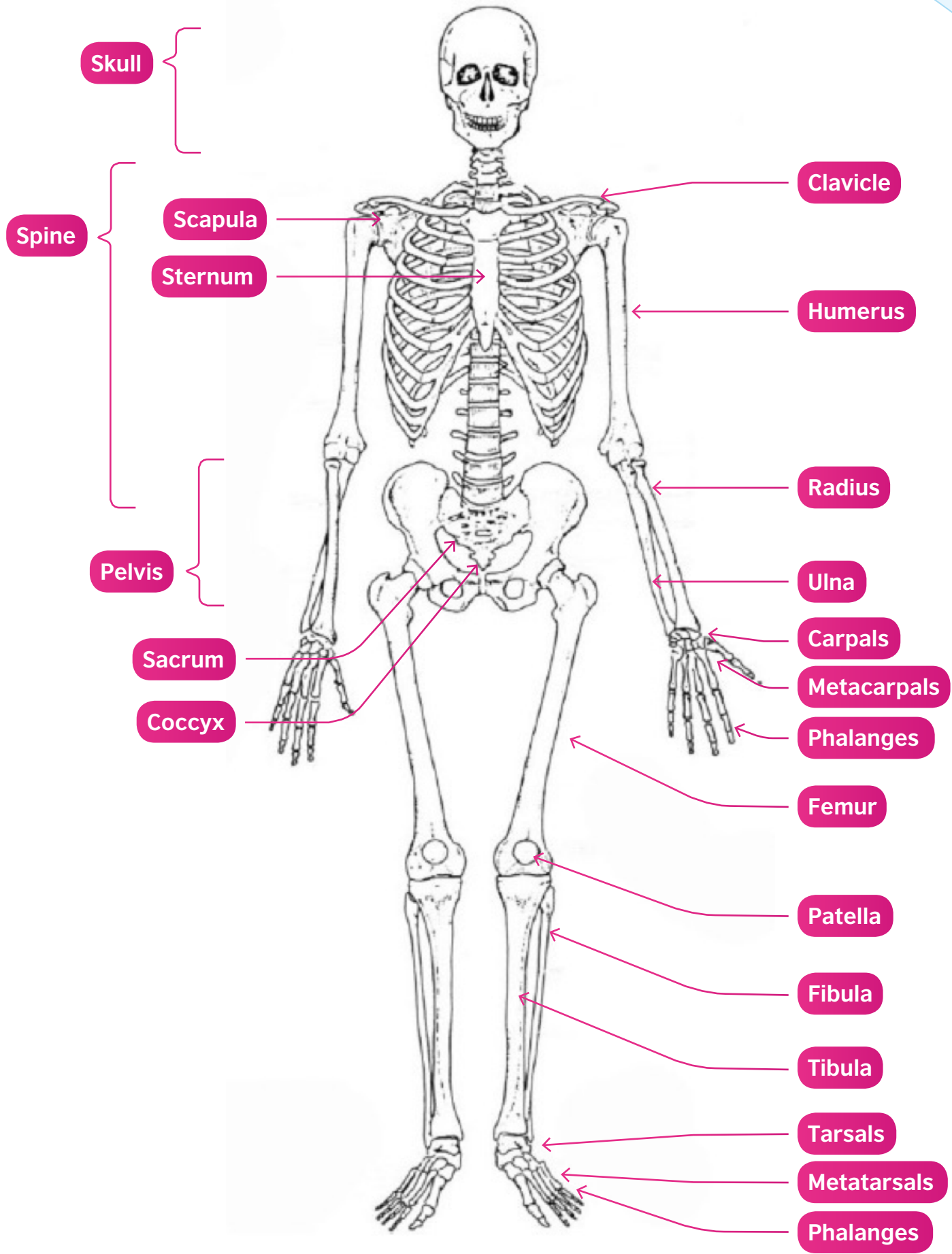
Humerus

Radius







Part 2 (answers)

Name the bones



Part 3

## How to mummify a banana

	<b>Step 1</b>	Peel a banana, and keep the skin. Eat the inside if you want to.
	<b>Step 2</b>	Put the banana skin in a plastic box. Cover it in salt, making sure the whole banana skin is covered.
	<b>Step 3</b>	Leave the banana skin in salt for two weeks.
	<b>Step 4</b>	Take the banana skin out of the salt, and brush off the salt. Sew up the banana skin, starting at the bottom and leaving a 5 cm gap at the top.
	<b>Step 5</b>	Stuff the skin with sawdust and nice-smelling herbs or spices. Finish sewing up the skin.
	<b>Step 6</b>	Wrap the stuffed banana in strips of cloth, so that it looks like a mummy.
	<b>Step 7</b>	Wait for two weeks.
	<b>Step 8</b>	Look at your mummified banana, and compare it to those from other groups. Discuss why some worked better than others.

## How ancient Egyptians made mummies

Read the table below, which describes how the ancient Egyptians mummified humans.

Then write the number of one or more steps for making a banana mummy in each empty box below, to show which banana steps are equivalent to which human steps.

Use each banana step once, more than once, or not at all.

	What the ancient Egyptians did	Equivalent step or steps in making a banana mummy
<b>Step 1</b>	Wash the body in river water mixed with natron. Natron is a type of salt.	no equivalent
<b>Step 2</b>	Remove the brain by pulling it out through the nose.	
<b>Step 3</b>	Make a cut in the body. Take out the stomach, intestines, lungs and liver. Dry the organs and place them in special jars.	
<b>Step 4</b>	Pack the body with stuffing and cover it with natron.	2 and 5
<b>Step 5</b>	Leave the body in natron for 40 days. The body dries out. Its colour becomes darker, and its mass gets less.	
<b>Step 6</b>	Take out the stuffing. Rinse and dry the body, and stuff with linen. Sew up the cut and add nice smelling oils, spices and beeswax.	
<b>Step 7</b>	Wrap the stuffed body in strips of cloth, and recite magic spells.	
<b>Step 8</b>	Fit a mask over the head and shoulders of the mummy.	no equivalent